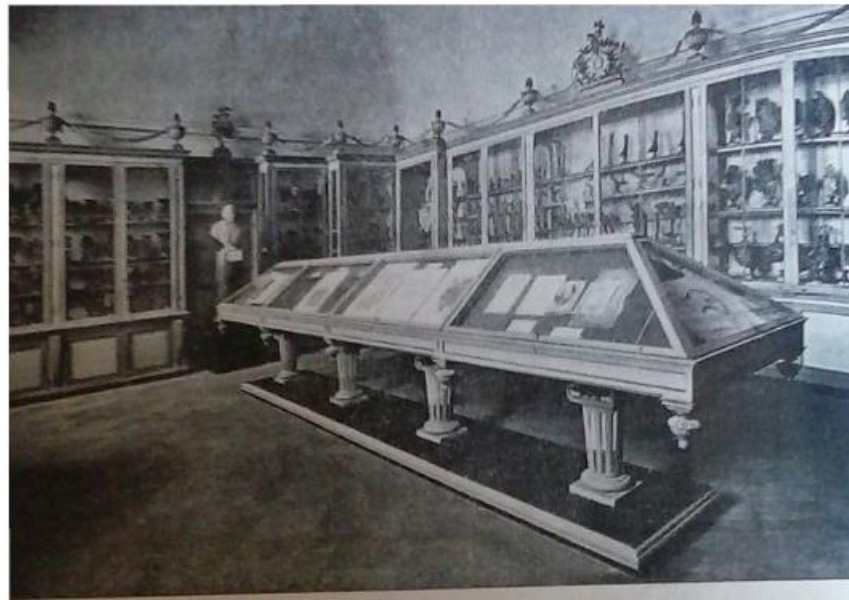


The Wax Models of the University History Museum: a Composite Heritage Between Past and Present

International Congress on Wax Modelling, London 2017

Maria Carla Garbarino, Valentina Cani,
Lidia Falomo Bernarduzzi, Paolo Mazzarello

University History Museum, Pavia



1936

University of Pavia



One of the courtyards
in the 18th century

Zaccaria Re, 1794. Watercolor, University History Museum







SCARPA'S ROOM







Modelli in cera dell'Organo dell'udito eseguiti da B. Panizza per suggerimento di A. Scarpa ed esposti all'Esposizione di Londra (1862).

MEDAL—*continued.*

NATION.	No. in Catalogue.	NAME OF EXHIBITOR.	OBJECTS REWARDED AND REASONS FOR THE AWARD.			
Italy	1792 to 1798 2322 2324 to 2332 2339 2340 2344 2346 2348 2349	Bonaini, Professor	For a collection of plans descriptive of the educational and charitable institutions of Florence.			
				1790	Calenzoli, C. and S.	For his anatomical preparations in wax.
				1784	Cocchi, Professor	For a collection of the palaeontology and geology of Central Italy from the Museum of Natural History at Florence.
				1798	Committee of Management of the Central Archives of Florence.	For collections and manuscripts adapted for the study of archæology.
				1788 & 1003	Engineering School of Turin	For a remarkable collection of fossils and crystals, and the model of a locomotive.
				2318	Lambruschini, R.	For his remarkable works on the art of instruction.
				2336	Maestri, Dr.	For his works on rearing the silkworm.
	1297	Panizza, Professor	For his anatomical preparations in wax, and especially his mercurial injections.			

Medals and honorarable mentions awarded by the international juries, with a list of jurors and the report of the council of chairmen, International Exhibition 1862.



Silkworm affected with the “muscardine” disease and development cycle of *Botrytis bassiana*, Natural History Museum, University of Pavia.



PATHOLOGY COLLECTION



“Scalp Ringworm of the scalp, face skin and shoulder”

«Made by Angelo Maestri in 1844»

Luigi Porta's death mask



PATHOLOGY WAXES



Lichen leprosus, 1826



Arabian elephantiasis (leprosy)

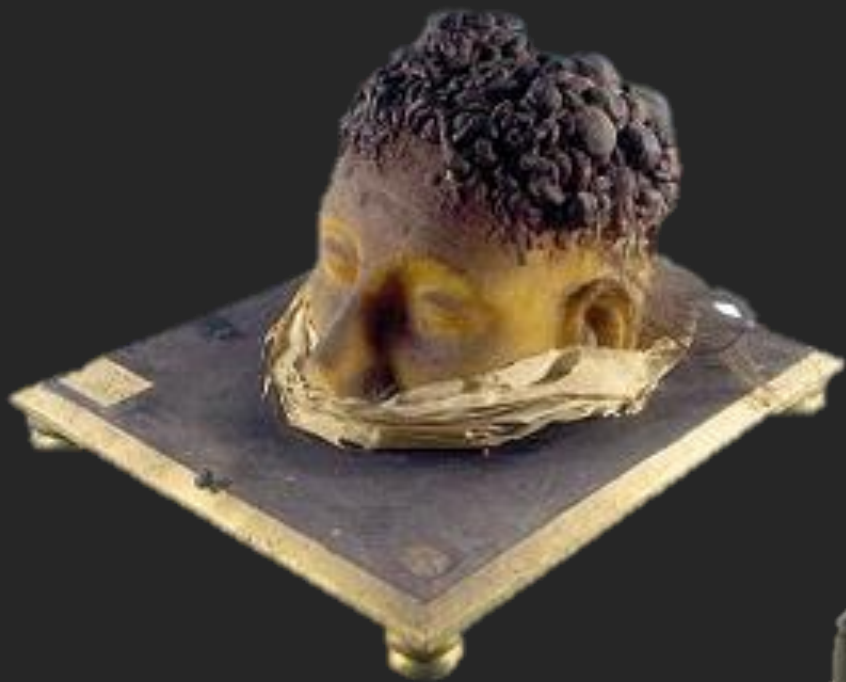


Elefantiasi della gamba e del piede del
lato destro, di un uomo. Gesso da cera eseguito
dal dott. Antonio Castiglioni di Milano.
Veggasi la descrizione nel Libro II.^o della Suavia
egiptica - m. Errore della cute e del tessuto
cellulare sottocutaneo.

Wax mold made by dr. Antonio Castiglioni in Milan



G. Sangalli, La scienza e la pratica dell'anatomia patologica, Milano, 1875



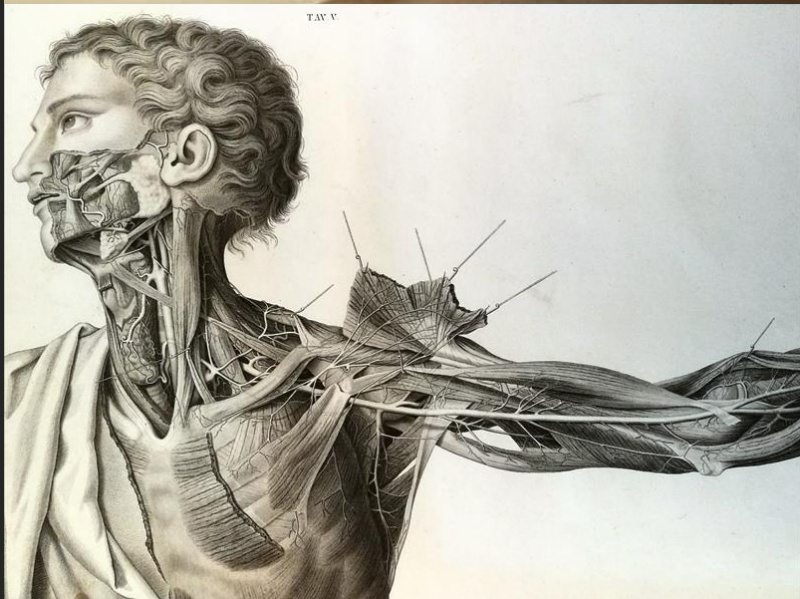
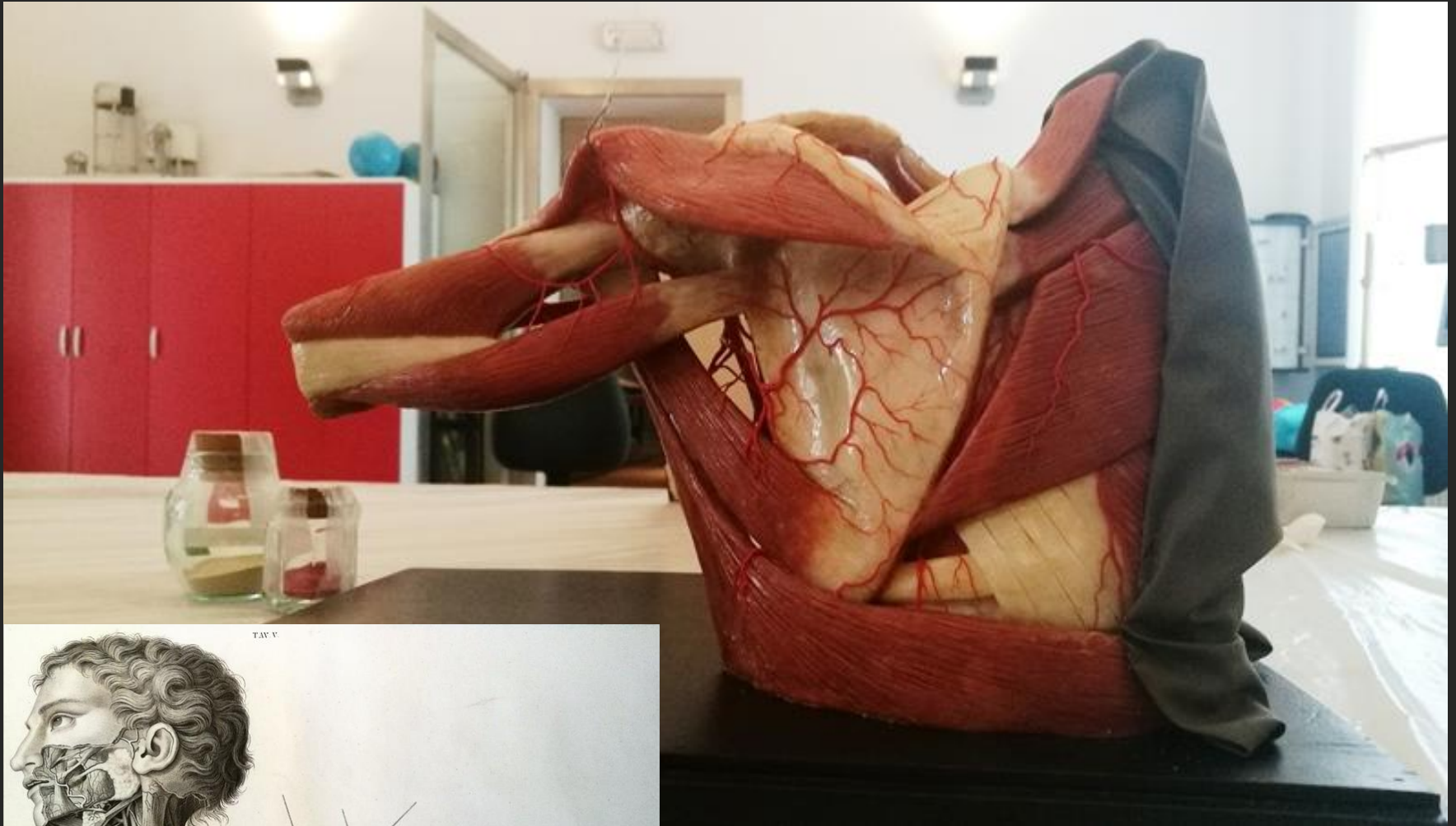
PORTA'S MUSEUM



St. 353, 354.
Vizi e Deformità
Piedi Vari in Cera
g. Bre 1844.
I pezzi in cera qui vi
indicate sono modelli di
piedi vari conosciuti, infan-
tali tratti dal famoso
Magazzino Volantino con-
tando di acci di Volario
(Piede sinistro St. 353) e
della bambina di Annun-
ta. Segaloni di Nozio

BOTANICAL WAXES







Museo per la storia
dell'Università di Pavia





<https://www.youtube.com/watch?v=b0jeX4D7F00>

Thank you for your attention!

To find out more about the museum:

✓ <http://musei.unipv.eu/msu/>

✓  <https://www.facebook.com/museostorico.unipv/>
[@museostorico.unipv]

✓  https://www.instagram.com/museostorico_unipv/
[@museostorico_unipv]